



CAPE COD JEWELRY®

ESTD LESTAGE 1863



\*LESTAGE® IS NOT AFFILIATED WITH EDEN HAND ARTS OF DENNIS, MA.  
THE CREATOR OF THE CAPE COD SCREWBALL® BRACELET.

VOLUME 7

**Bernards**  
Jewelry Group, Inc.

333 Washington St. Boston, MA 02108 | 800.237.6273





## *Wear the classic.*

LeStage manufacturing has been crafting fine jewelry right here in Massachusetts for over 150 years. Our authentic Cape Cod Jewelry® Collection is handcrafted using only responsibly sourced precious metals and is backed by a lifetime warranty.



### CLASSIC CAPE COD BRACELET

- SB5405 STERLING SILVER
- ZB5405 STERLING SILVER WITH 14K GOLD BEAD
- RB5405 STERLING SILVER WITH 14K ROSE GOLD BEAD

SIZES: 5, 5½, 6, 6½, 7, 7½ & 8"



### DOUBLE CAPE COD BRACELET

- SB5411 STERLING SILVER
- ZB5411 STERLING SILVER WITH 14K GOLD BEADS
- RB5411 STERLING SILVER WITH 14K ROSE GOLD BEADS

SIZES: 5½, 6, 6½, 7, 7½ & 8"



### TRIPLE CAPE COD BRACELET

- SB5420 STERLING SILVER
- ZB5420 STERLING SILVER WITH 14K GOLD BEADS
- RB5420 STERLING SILVER WITH 14K ROSE GOLD BEADS

SIZES: 5½, 6, 6½, 7, 7½ & 8"



## SWIRL CAPE COD BRACELET

- SB5460 STERLING SILVER
- ZB5460 STERLING SILVER WITH 14K GOLD BEAD
- RB5460 STERLING SILVER WITH 14K ROSE GOLD BEAD

SIZES: 5½, 6, 6½, 7, 7½ & 8"



## PATTERNED CAPE COD BRACELET

- SB5407 STERLING SILVER
- ZB5407 STERLING SILVER WITH 14K GOLD BEAD
- RB5407 STERLING SILVER WITH 14K ROSE GOLD BEAD

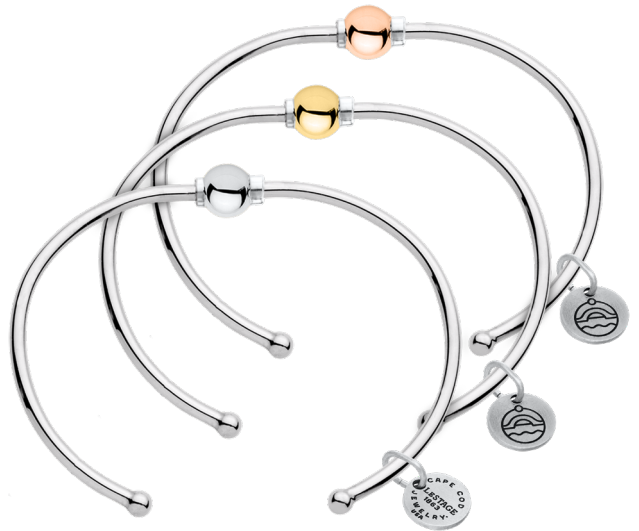
SIZES: 5½, 6, 6½, 7, 7½ & 8"



## DOUBLE CUFF CAPE COD BRACELET

- SB5410 STERLING SILVER
- ZB5410 STERLING SILVER WITH 14K GOLD BEADS
- RB5410 STERLING SILVER WITH 14K ROSE GOLD BEADS

SIZES: 5½, 6, 6½, 7, 7½ & 8"



## CLASSIC CUFF CAPE COD BRACELET

- SB5463 STERLING SILVER
- ZB5463 STERLING SILVER WITH 14K GOLD BEAD
- RB5463 STERLING SILVER WITH 14K ROSE GOLD BEAD

SIZES: 5½, 6, 6½, 7, 7½ & 8"



## CUBIC ZIRCONIA CAPE COD BRACELET

SB5462 STERLING SILVER BEAD WITH SWAROVSKI CUBIC ZIRCONIA

SIZES: 5½, 6, 6½, 7, 7½ & 8"



## PATTERNED CUBIC ZIRCONIA CAPE COD BRACELET

SB5464 STERLING SILVER BEAD WITH SWAROVSKI CUBIC ZIRCONIA

SIZES: 5½, 6, 6½, 7, 7½ & 8"



ATTRACTIVE  
CAPE COD JEWELRY®  
BOX INCLUDES POLISHING CLOTH



## 14K GOLD FILLED CAPE COD BRACELET

FB5405 14K GOLD FILLED WITH STERLING SILVER BEAD

SIZES: 5½, 6, 6½, 7, 7½ & 8"





## DIAMOND CAPE COD BRACELET

ZB5634 STERLING SILVER WITH 14K GOLD BEAD & .33 TCW DIAMONDS

RB5634 STERLING SILVER WITH 14K ROSE GOLD BEAD & .33 TCW DIAMONDS

SIZES: 5½, 6, 6½, 7, 7½ & 8"



## 14K GOLD DIAMOND CAPE COD BRACELET

KB5634 14K GOLD WITH .33 TCW DIAMONDS

SIZES: 5½, 6, 6½, 7, 7½ & 8"



## 14K GOLD CAPE COD BRACELET

KB5405 14K GOLD

SIZES: 5½, 6, 6½, 7, 7½ & 8"



## 14K GOLD DOUBLE CAPE COD BRACELET

KB5411 14K GOLD

SIZES: 5½, 6, 6½, 7, 7½ & 8"



## CLASSIC REPLACEMENT BEAD

- SR5405 STERLING SILVER
- ZR5405 STERLING SILVER WITH 14K GOLD BEAD
- RR5405 STERLING SILVER WITH 14K ROSE GOLD BEAD



## SWIRL REPLACEMENT BEAD

- SF5460 STERLING SILVER
- ZR5460 STERLING SILVER WITH 14K GOLD BEAD
- RR5460 STERLING SILVER WITH 14K ROSE GOLD BEAD

## CHANNEL SET REPLACEMENT BEAD

- SR5462 STERLING SILVER SWAROVSKI CUBIC ZIRCONIA
- ZR5634 14K GOLD BEAD WITH .33 TCW DIAMONDS
- RR5634 14K ROSE GOLD BEAD WITH .33 TCW DIAMONDS



## CLASSIC CAPE COD RING

- SF5405 STERLING SILVER
- ZF5405 STERLING SILVER WITH 14K GOLD BEAD
- RF5405 STERLING SILVER WITH 14K ROSE GOLD BEAD

SIZES: 5, 6, 7, 8, & 9

## CUBIC ZIRCONIA CAPE COD RING

- SF5462 STERLING SILVER WITH SWAROVSKI CUBIC ZIRCONIA

SIZES: 5, 6, 7, 8, & 9



## 20MM & 26MM DOUBLE BALL HOOP EARRINGS

- SE5411 STERLING SILVER
- ZE5411 STERLING SILVER WITH 14K GOLD BEADS AND TOP WIRE
- SE5411-J STERLING SILVER
- ZE5411-J STERLING SILVER WITH 14K GOLD BEADS AND TOP WIRE





## 15MM CLASSIC HOOP EARRINGS

SE5414 STERLING SILVER  
 ZE5414 STERLING SILVER WITH 14K GOLD BEAD AND TOP WIRE  
 RE5414 STERLING SILVER WITH 14K ROSE GOLD BEAD AND TOP WIRE  
 KE5414 14K GOLD



## 20MM CLASSIC HOOP EARRINGS

SE5405 STERLING SILVER  
 ZE5405 STERLING SILVER WITH 14K GOLD BEAD AND TOP WIRE  
 RE5405 STERLING SILVER WITH 14K ROSE GOLD BEAD AND TOP WIRE  
 KE5405 14K GOLD



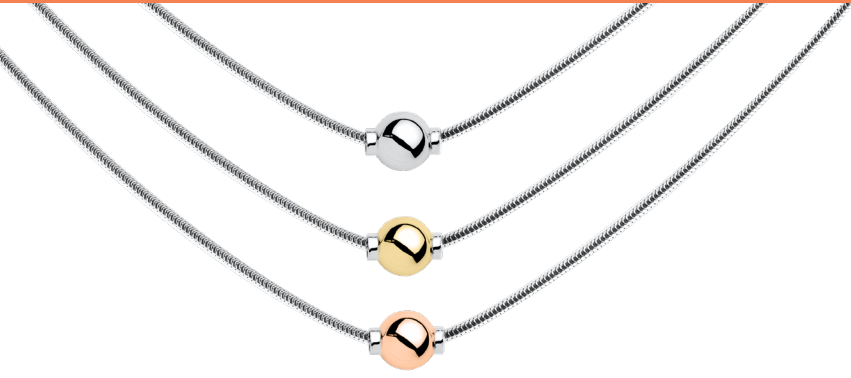
## 20MM SWIRL HOOP EARRINGS

SE5460 STERLING SILVER  
 ZE5460 STERLING SILVER WITH 14K GOLD BEAD AND TOP WIRE  
 RE5460 STERLING SILVER WITH 14K ROSE GOLD BEAD AND TOP WIRE  
 KE5460 14K GOLD



## 26MM CLASSIC HOOP EARRINGS

SE5405-J STERLING SILVER  
 ZE5405-J STERLING SILVER WITH 14K GOLD BEAD AND TOP WIRE  
 RE5405-J STERLING SILVER WITH 14K ROSE GOLD BEAD AND TOP WIRE  
 KE5405-J 14K GOLD



## CLASSIC CAPE COD SNAKE NECKLACE

- SN5405 STERLING SILVER
- ZN5405 STERLING SILVER WITH 14K GOLD BEAD
- RN5405 STERLING SILVER WITH 14K ROSE GOLD BEAD

SIZES: 16", 18", & 20" SNAKE CHAIN  
WITH LOBSTER CLASP



## CLASSIC CAPE COD OMEGA NECKLACE

- SN5405 STERLING SILVER
- ZN5405 STERLING SILVER WITH 14K GOLD BEAD
- RN5405 STERLING SILVER WITH 14K ROSE GOLD BEAD

SIZES: ADJUSTABLE 16 TO 18" OMEGA CHAIN  
WITH LOBSTER CLASP



## SWIRL CAPE COD SNAKE NECKLACE

- SN5460 STERLING SILVER
- ZN5460 STERLING SILVER WITH 14K GOLD BEAD
- RN5460 STERLING SILVER WITH 14K ROSE GOLD BEAD

SIZES: 16", 18", & 20" SNAKE CHAIN  
WITH LOBSTER CLASP



## SWIRL CAPE COD OMEGA NECKLACE

- SN5460 STERLING SILVER
- ZN5460 STERLING SILVER WITH 14K GOLD BEAD
- RN5460 STERLING SILVER WITH 14K ROSE GOLD BEAD

SIZES: ADJUSTABLE 16 TO 18" OMEGA CHAIN  
WITH LOBSTER CLASP





## DIAMOND CAPE COD SNAKE NECKLACE

- ZN5634 STERLING SILVER WITH 14K GOLD BEAD & .33 TCW DIAMONDS
- RN5634 STERLING SILVER WITH 14K ROSE GOLD BEAD & .33 TCW DIAMONDS

SIZES: 16", 18", & 20" SNAKE CHAIN  
WITH LOBSTER CLASP



## DIAMOND CAPE COD OMEGA NECKLACE

- ZN5634 STERLING SILVER WITH 14K GOLD BEAD & .33 TCW DIAMONDS
- RN5634 STERLING SILVER WITH 14K ROSE GOLD BEAD & .33 TCW DIAMONDS

SIZES: ADJUSTABLE 16 TO 18" OMEGA CHAIN  
WITH LOBSTER CLASP



## CUBIC ZIRCONIA CAPE COD SNAKE NECKLACE

- SN5462 STERLING SILVER BEAD WITH SWAROVSKI CUBIC ZIRCONIA

SIZES: 16", 18", & 20" SNAKE CHAIN  
WITH LOBSTER CLASP



## CUBIC ZIRCONIA CAPE COD OMEGA NECKLACE

- SN5462 STERLING SILVER BEAD WITH SWAROVSKI CUBIC ZIRCONIA

SIZES: ADJUSTABLE 16 TO 18" OMEGA CHAIN  
WITH LOBSTER CLASP



## SWIRL CAPE COD ANKLET

- SA5460 STERLING SILVER
- ZA5460 STERLING SILVER WITH 14K GOLD BEAD
- RA5460 STERLING SILVER WITH 14K ROSE GOLD BEAD

SIZES:  
 9 & 10" SNAKE CHAIN WITH LOBSTER CLASP  
 ADJUSTABLE 9½ - 10½" OMEGA CHAIN (SHOWN)



### TOP OF COUNTER DOUBLE SIDED DISPLAY

8 ½" X 8" X 12"

INCLUDES 20 PIECES OF YOUR CHOICE:  
 10 BRACELETS, 4 PAIRS OF EARRINGS,  
 2 NECKLACES, AND 4 RINGS.

## CLASSIC CAPE COD ANKLET

- SA5405 STERLING SILVER
- ZA5405 STERLING SILVER WITH 14K GOLD BEAD
- RA5405 STERLING SILVER WITH 14K ROSE GOLD BEAD

SIZES:  
 9 & 10" SNAKE CHAIN WITH LOBSTER CLASP  
 ADJUSTABLE 9½ - 10½" OMEGA CHAIN (SHOWN)







ATTRACTIVE DISPLAYS AVAILABLE WITH PROGRAM PURCHASE.



**21 PIECE IN-CASE ASSORTMENT**  
17" X 9"

DISPLAY INCLUDES 14 BRACELETS, 5 PAIRS OF EARRINGS,  
NECKLACE, AND RING OF YOUR CHOICE.



**8 PIECE IN-CASE ASSORTMENT**  
10" X 7 1/2"

DISPLAY INCLUDES 4 BRACELETS, 2 PAIRS OF EARRINGS,  
NECKLACE, AND RING OF YOUR CHOICE.



**8 PIECE IN-CASE BRACELET DISPLAY**  
4" X 9"

RAMP STYLE DISPLAY HOLDS 8  
BRACELETS OF YOUR CHOICE.



# SIZING REFERENCE CHART

## HOW TO MEASURE WRIST FOR A CAPE COD BRACELET:

TAKE A PIECE OF STRING OR TAPE MEASURE AND WRAP AROUND WRIST. ROUND UP TO THE NEAREST ½" TO DETERMINE THE SIZE OF THE BRACELET. CAPE COD BRACELETS ARE MEANT TO BE WORN SNUG AND MANY PEOPLE NEVER TAKE OFF THEIR BRACELET. THE BEAD UNSCREWS TO OPEN THE BRACELET SO IT CAN BE PUT ON.

